

# AG03-1

**Siemens S7-1200®  
PROFINET® Interface Module  
for TIA Portal® V14 SP1  
via HMS Anybus® Communicator™**

Software Description



## Table of contents

<b>1</b>	<b>General Notes.....</b>	<b>4</b>
1.1	Trademarks .....	4
1.2	Liability .....	4
1.3	Limitations .....	4
1.4	Requirements .....	5
1.5	Versions Overview .....	5
1.6	List of Abbreviations .....	5
<b>2</b>	<b>Hardware Configuration .....</b>	<b>6</b>
2.1	Setup of Anybus® Communicator™ .....	6
2.1.1	ABC Configuration File .....	6
2.1.2	Transfer Configuration .....	6
2.1.3	ABC Cycle Time .....	7
2.2	Setup of PLC and PROFINET® .....	8
2.2.1	Create New TIA Portal® Project .....	8
2.2.2	Add Your PLC to the Project.....	9
2.2.3	Configure the IP Address of the PLC in the Project.....	10
2.2.4	Open the Window “Online & diagnostics” of the ABC .....	11
2.2.5	Enter the IP Address of the ABC .....	11
2.2.6	Enter the PROFINET® Device Name of the ABC .....	12
2.2.7	Register the GSDML Device Description File for ABC.....	12
2.2.8	Add New Module to Your Hardware Configuration.....	13
2.2.9	Select the PROFINET® IO Controller.....	14
2.2.10	Configure the Sync Domain.....	14
2.2.11	Configure the IP Address of the ABC in the Project .....	15
2.2.12	Configure the Data Input / Output of ABC .....	16
<b>3</b>	<b>Software Configuration .....</b>	<b>17</b>
3.1	Determine the “System constants” of ABC In- and Output for the SIKO Function Block .....	17
3.2	Import the SIKO-library .....	17
3.3	Delete OB1 .....	18
3.4	Create New OB1 in Language SCL .....	19
3.5	Function Block Call .....	20
3.5.1	Setup the Input and Output Addresses of the SIKO Function Block .....	21
3.6	Add the Watch Table “SIKO_AG03-1vPN_Watch_1” from the SIKO-library .....	21
3.7	Complete the Project.....	22
3.8	Work with the Project .....	22
<b>4</b>	<b>Communication settings.....</b>	<b>23</b>
4.1	Data Exchange .....	23
4.2	Parameter Access.....	23
4.2.1	Read Parameters .....	23
4.2.2	Write Parameters.....	23
4.2.3	Copy Parameters from Read to Write .....	23

4.3	S-Commands .....	23
4.4	Counter Value .....	24
4.4.1	Error Codes.....	25

## **1 General Notes**

### **1.1 Trademarks**

All trademarks or brand names including those protected for third parties shall unconditionally be subject to the provisions of the applicable laws governing trademarks and the proprietary rights of the registered owners. All trademarks, brand names or firm names are or may be trademarks or registered trademarks of their respective proprietors and are used only for description and unique identification. All rights not explicitly granted here are reserved.

Failure to explicitly identify trademarks used in this manual does not indicate that a name is free from rights of third parties.

Windows®, Windows® XP are trademarks of Microsoft® Corporation in the USA and other countries.

Anybus® is a registered trademark of HMS Industrial Networks AB, Sweden, USA, Germany and other countries.

SIMATIC® TIA Portal® and S7-300®, S7-400®, S7-1200®, S7-1500® are registered trademarks of Siemens AG.

PROFIBUS® and PROFINET® are registered trademarks of PROFIBUS and PROFINET International (PI).

### **1.2 Liability**

SIKO GmbH assumes no warranty whatsoever regarding topicality, correctness, completeness or quality of the information or software products provided. All liability claims against SIKO GmbH referring to material or immaterial damages caused by using or not using the information or software provided or by using erroneous or incomplete information or software are always excluded.

### **1.3 Limitations**

The library and its function were tested with SIMATIC® S7-1200 CPU 6ES7 212-1BD30-0XB0. The interface module was engineered in SCL using Siemens TIA Portal® V14 SP1 Update 1. There is also a library available for Siemens S7-1500 systems. The method described in this document is the same for S7-1500 systems.

The configuration file and its function were tested on an Anybus® Communicator™ AB7013. The file was setup using Anybus® Configuration Manager - Communicator RS232/422/485 version v.4.4.1.3 (Win 2000/XP/Vista/7).

## 1.4 Requirements

- Basic knowledge of handling and programming Siemens systems.
- Familiarity with PROFINET® IO.
- Basic knowledge of setup and handling Anybus® Communicator™
- Familiarity with Anybus® Configuration Manager

## 1.5 Versions Overview

This manual is related to

- AG03-1 firmware version  $\geq 1.02$
- Library "SIKO\_SN5-PN\_TIA\_V13\_SP1\_Upd6\_S71200\_LIB\_V501"
- Function block FB203 "SIKO\_DRV\_AG03-1vPN"
- Anybus® configuration file "SIKO\_EPN\_31-SN5\_pattern"
- Anybus® Communicator™ file "GSDML-V2.3-HMS-ABC\_PROFINET\_IO-20141127.xml"

## 1.6 List of Abbreviations

EPN	PROFINET®	ABC	Anybus® Communicator™
SN5	SIKONETZ-5	ACM	Anybus® Configuration Manager
SW	Status Word	FB	Function Block
CW	Control Word	DB	Data Block

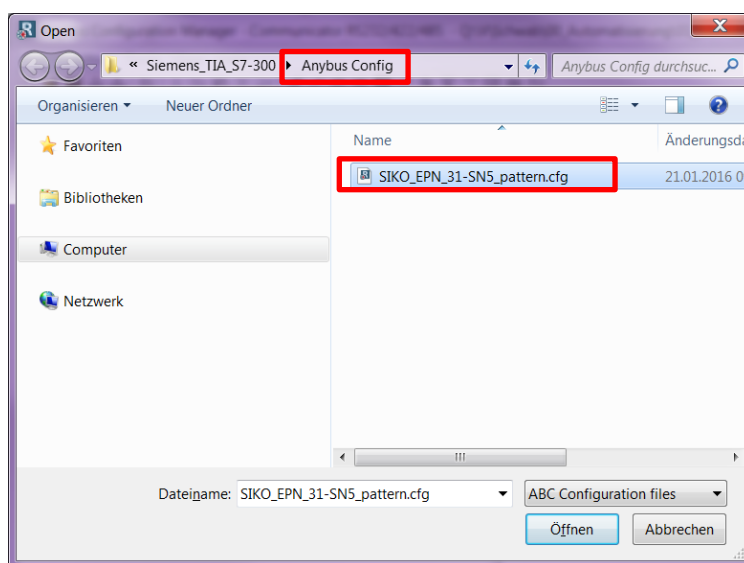
## 2 Hardware Configuration

### 2.1 Setup of Anybus® Communicator™

Please note, that the Anybus® configuration file is designed for a flexible SIKONETZ-5 participant numbers of minimum 1 to maximum 31. Later IP Address and PROFINET® device name has to be modified according to your network requirements. Please consider an IP Address modification when reading further on.

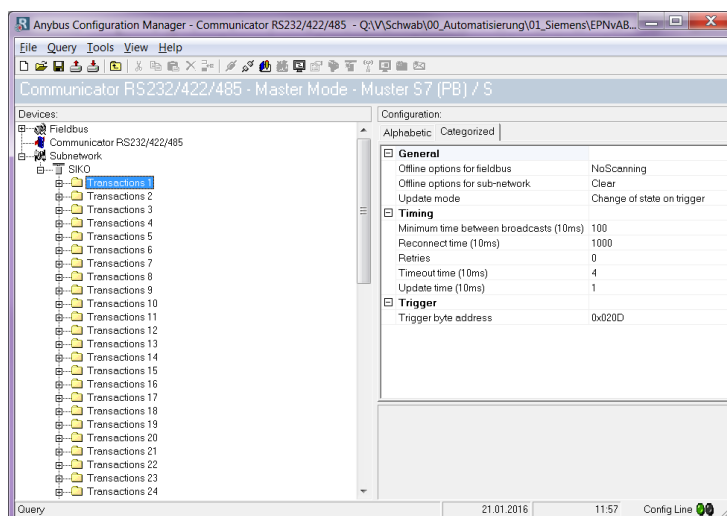
#### 2.1.1 ABC Configuration File

Start ACM and select configuration file “SIKO\_EPN\_31-SN5\_pattern.cfg” from the folder “Anybus Config”.



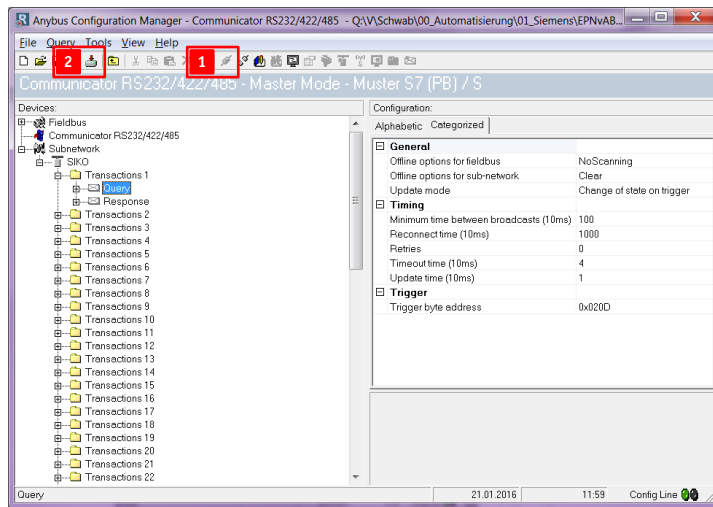
#### 2.1.2 Transfer Configuration

Connect ABC with PC via “RS232 configuration cable” of Anybus accessories.



1. Press “Connect” to go online with the ABC.
2. Press “download to the ABC”.

You should have the following view:



### 2.1.3 ABC Cycle Time

Each transaction consists of “Query” and “Response”. The minimum time for a used transaction is about  $\geq 10$  ms. Each Subnetwork cycle has an overhead of about  $\geq 100$  ms.

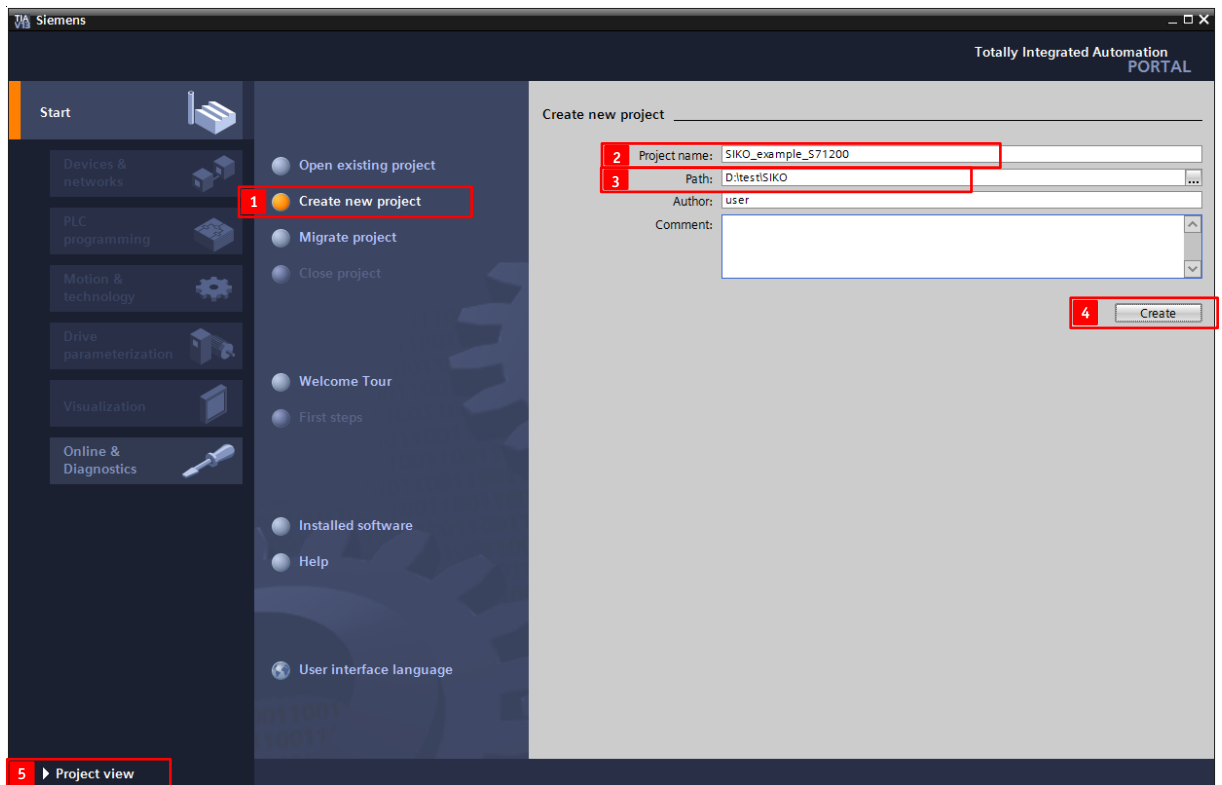
Since the plc cycle time is asynchronous with ABC cycle time the FB integrates a trigger instead of checksum to the SIKONETZ-5 structure. When a master telegram is completed by the FB the trigger will be incremented. The corresponding transaction will be updated by change of state on trigger and exchanges the trigger with checksum byte before the SIKONETZ-5 telegram is send into subnetwork.

The subnetwork reply is checked and checksum byte is exchanged with incremented trigger byte before the telegram is send to plc by ABC. The FB will wait until a valid slave telegram is responded before sending a new telegram. Due to it the minimum time between update cycle amounts to  $\geq 110$  ms minimum. Please consider this for time critical applications!

## 2.2 Setup of PLC and PROFINET®

### 2.2.1 Create New TIA Portal® Project

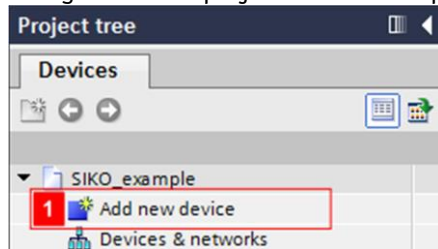
1. Execute the command “Create new project”.
2. Enter the project name “SIKO\_example\_S71200”.
3. Choose a project path.
4. Execute the command “Create”.
5. Change to “Project view”.



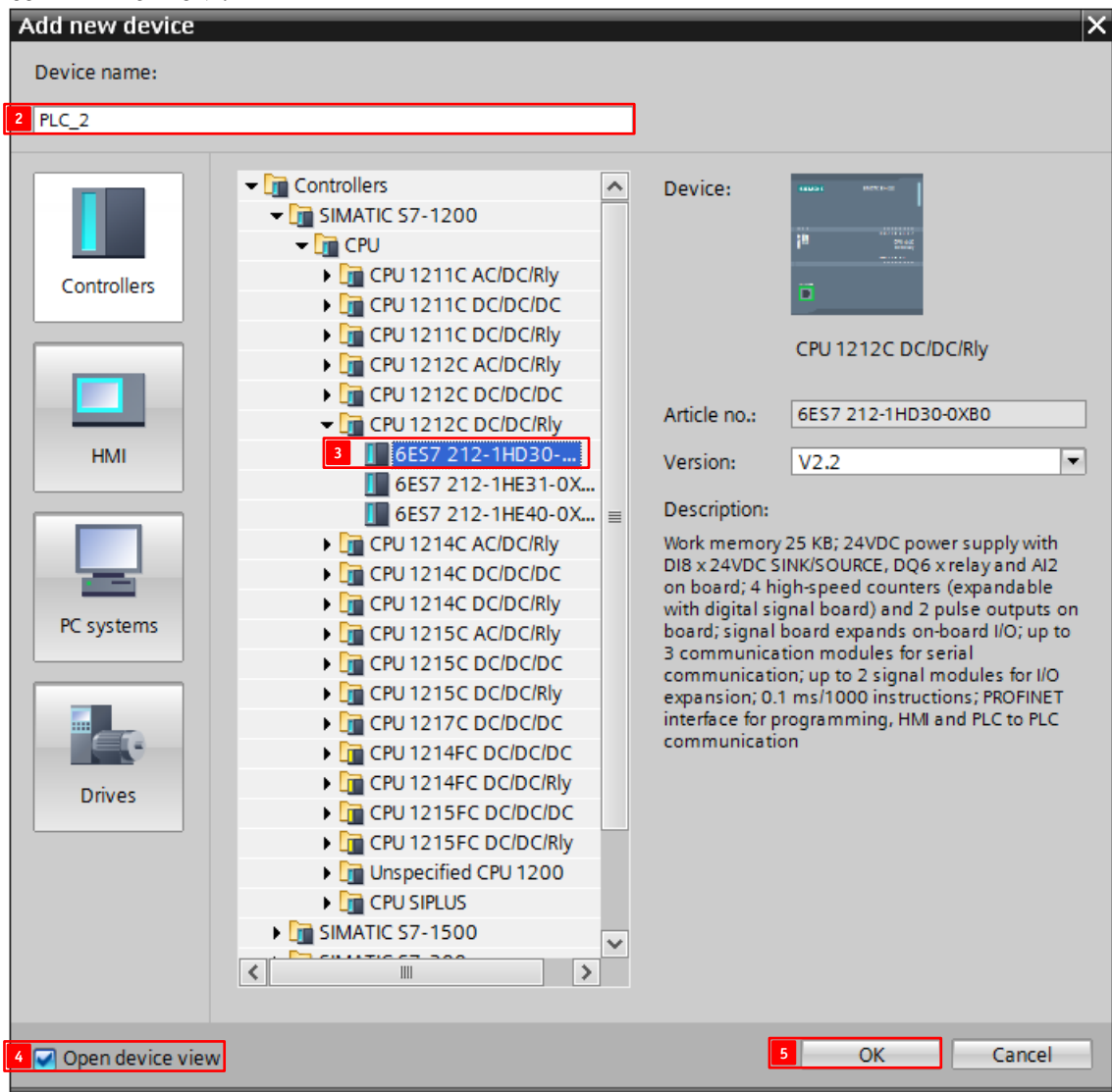


### 2.2.2 Add Your PLC to the Project

1. Navigate to the project tree in the project view and double-click on "Add new device".



2. Assign a device name, for example "PLC\_1".
3. Select "Controllers" > "SIMATIC S7-1200" > "CPU" > "CPU 1212C AC/DC/Rly" > "6ES7 212-1BD30-0XB0".
4. Select "Open device view".
5. Confirm with "OK".



### 2.2.3 Configure the IP Address of the PLC in the Project

**NOTICE**

The IP settings in this example can cause serious network problems under certain circumstances. If you are in doubt about the correct IP settings for your network, ask your system administrator for assistance.

1. Navigate to the tab "Device view".
2. Choose "PLC\_1".
3. Double-click on Profinet-Port.
4. Left-click on "Ethernet addresses" from folder "General".
5. Select "Set IP address in the project".
6. Enter a valid IP address.
7. Enter a valid subnet mask.

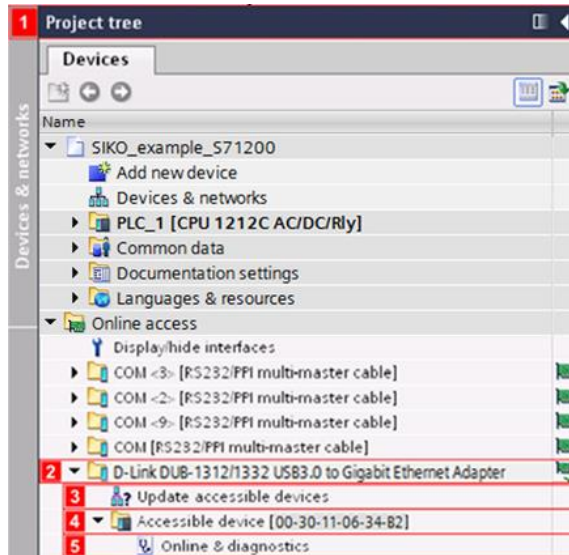
The screenshot displays the SIKO configuration software interface. The top window, titled "SIKO\_example\_S71200 - PLC\_1 [CPU 1212C AC/DC/Rly]", shows a rack diagram on the left with "Rack\_0" containing modules "103", "102", "101", and "1". The "Device overview" table on the right lists the modules:

Module	Slot	I address	Q address	Type	Article no.
PLC_1	1			CPU 1212C AC/DC/Rly	6ES7 21...
DI 8/DQ 6_1	1 1	0	0	DI 8/DQ 6	
AI 2_1	1 2	64...67		AI 2	
HSC_1	1 16	1000...10...		HSC	
HSC_2	1 17	1004...10...		HSC	
HSC_3	1 18	1008...10...		HSC	
HSC_4	1 19	1012...10...		HSC	
HSC_5	1 20	1016...10...		HSC	
HSC_6	1 21	1020...10...		HSC	
Pulse_1	1 32		1000...1001	Pulse generator (PTO/P...	
Pulse_2	1 33		1002...1003	Pulse generator (PTO/P...	
PROFINET interface_1	1 X1			PROFINET interface	

The bottom window, titled "PROFINET interface\_1 [Module]", shows the "Ethernet addresses" tab. Under "Interface networked with", the "Subnet" is set to "PN/IE\_1". Under "IP protocol", the "Set IP address in the project" option is selected, with the "IP address" set to "192 . 168 . 3 . 6" and the "Subnet mask" set to "255 . 255 . 255 . 224".

### 2.2.4 Open the Window “Online & diagnostics” of the ABC

1. Navigate to the project tree in the project view.
2. Choose your network interface.
3. Double-click on “Update accessible devices”.
4. Identify the HMS ABC by its MAC-ID.
5. Double-click on “Online & diagnostics”.

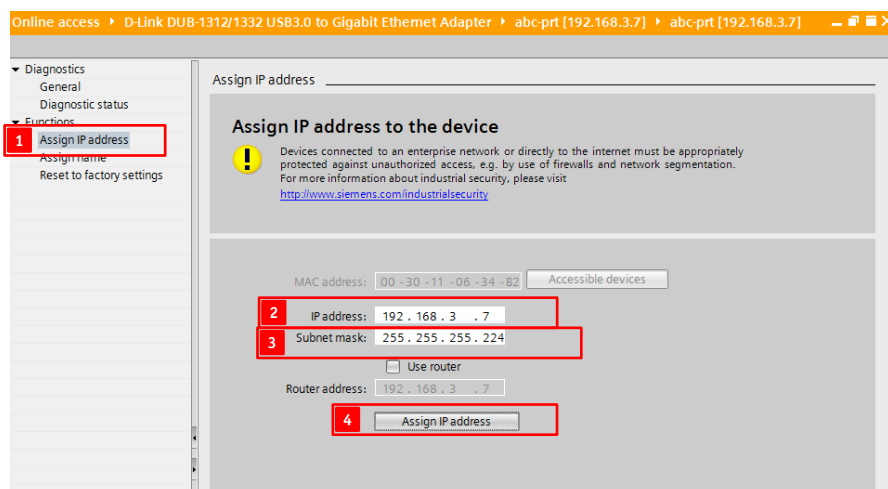


### 2.2.5 Enter the IP Address of the ABC

#### NOTICE

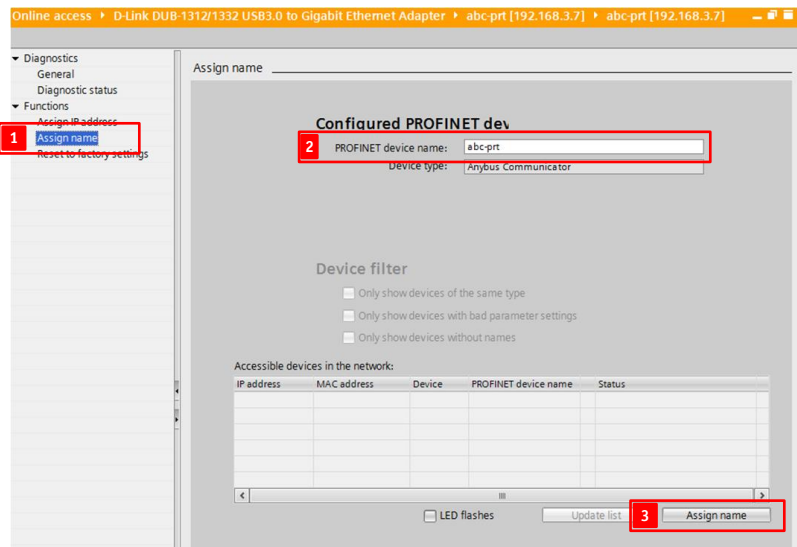
The IP settings in this example can cause serious network problems under certain circumstances. If you are in doubt about the correct IP settings for your network, ask your system administrator for assistance.

1. Navigate to folder “Assign IP address” in the “Online & diagnostics” window.
2. Enter a valid IP address, “192.168.3.7” for example.
3. Enter a valid subnet mask, “255.255.255.224” for example.
4. Execute the command “Assign IP address”.



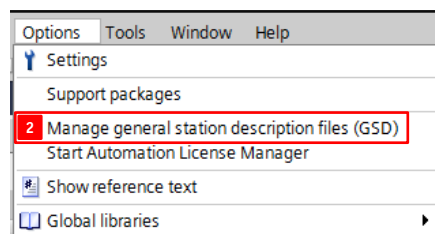
### 2.2.6 Enter the PROFINET® Device Name of the ABC

1. Navigate to the folder “Assign name” in the “Online & diagnostics” window.
2. Enter a valid PROFINET® device name, “abc-prt” for example.
3. Execute the command “Assign name”.

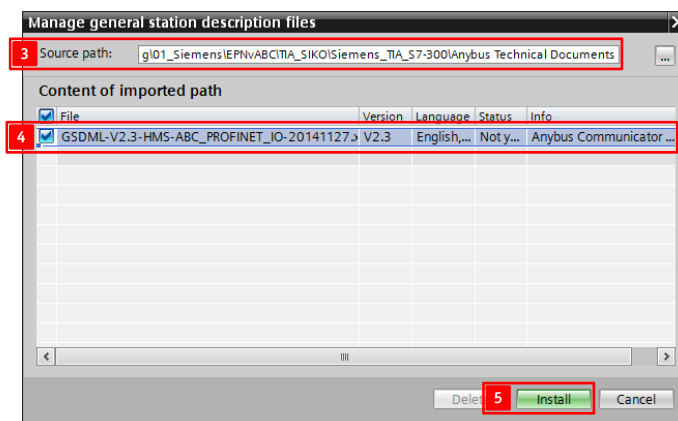


### 2.2.7 Register the GSDML Device Description File for ABC

1. Go to the TIA Portal® “Project view”.
2. Execute the command: “Options” > “Manage general station description files (GSD)”.

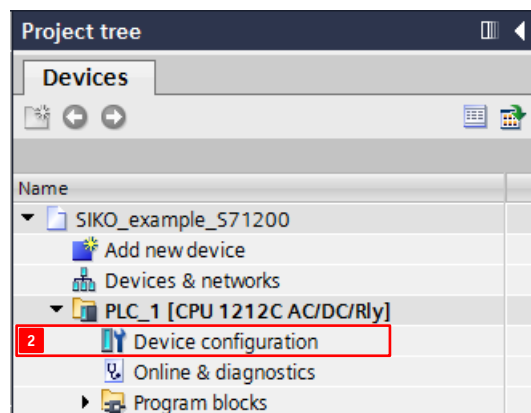


3. Browse to the storage location of the GSDML file.
4. Select the GSDML file for Anybus Communicator.
5. Execute the command “Install”.

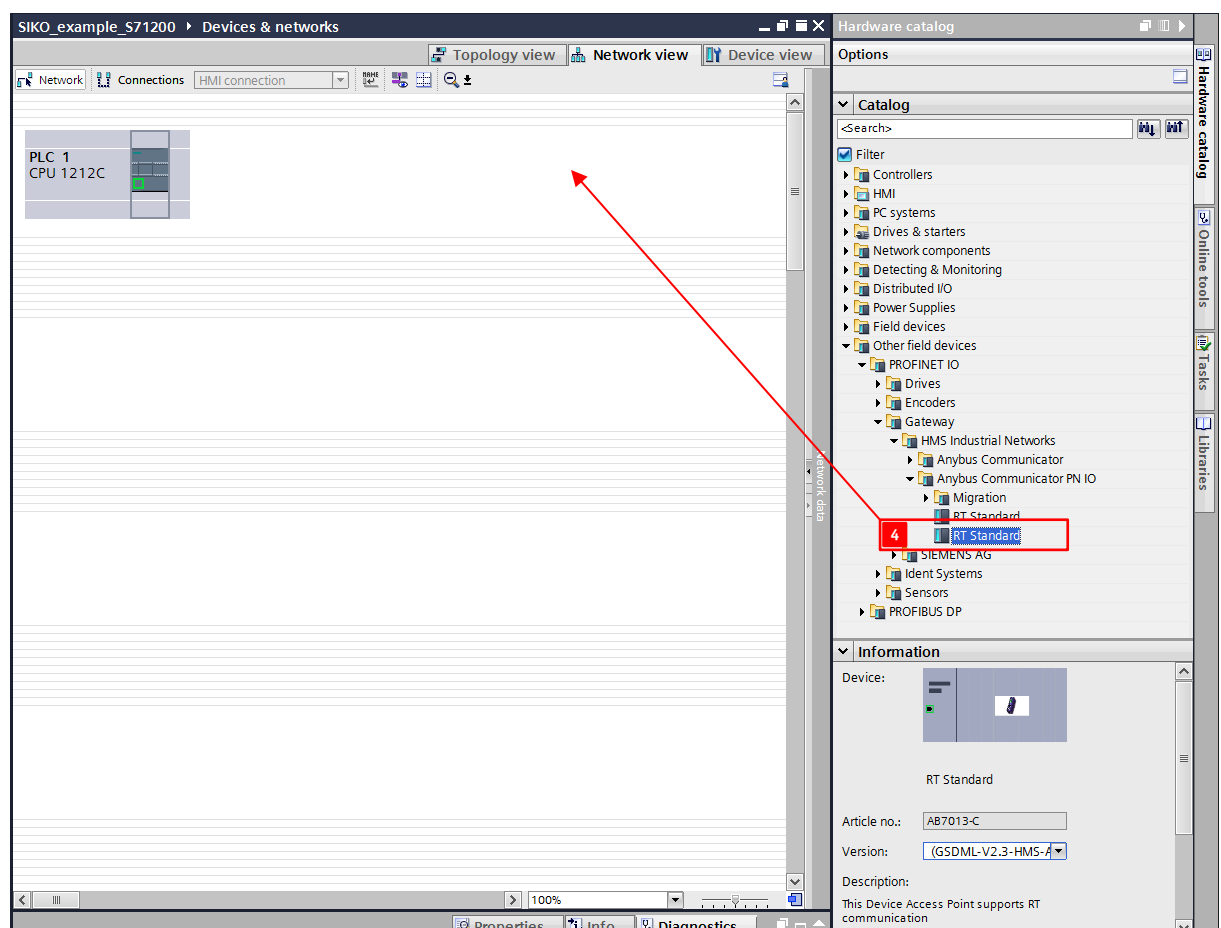


## 2.2.8 Add New Module to Your Hardware Configuration

1. Go to the TIA Portal® “Project view”.
2. Double-click on “Device configuration” of your PLC.

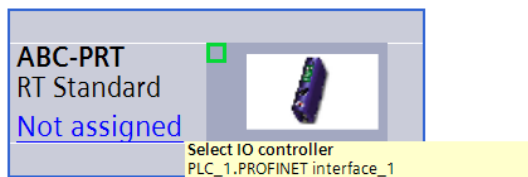


3. Navigate to the tab “Network view”.
4. Add “RT Standard” from device “Anybus Communicator PN IO > Headmodules” of the hardware catalog to the “Devices & networks window”. Please check corresponding GSDML version!



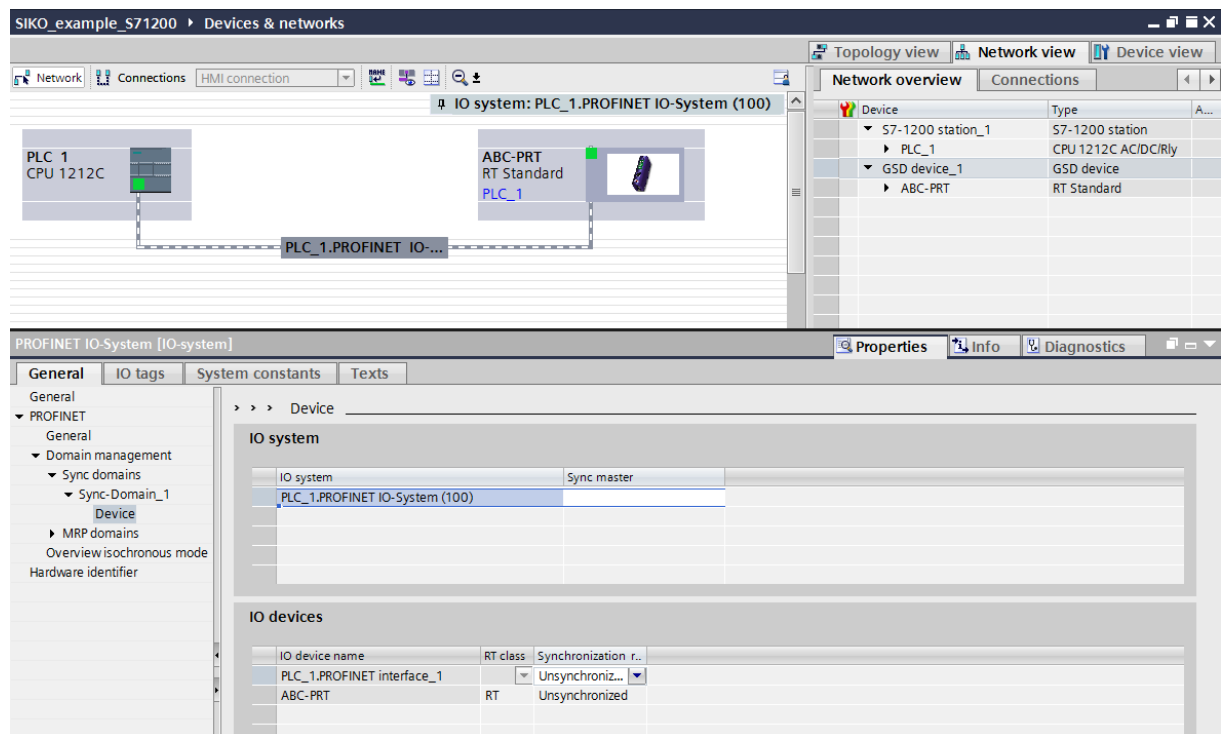
### 2.2.9 Select the PROFINET® IO Controller

1. Left-click “Not assigned” inside the ABC symbol.
2. Select IO Controller.



### 2.2.10 Configure the Sync Domain

1. Double-click on the PROFINET® IO-System.
2. Make the settings.

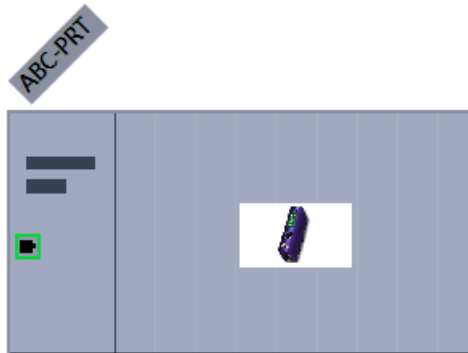


### 2.2.11 Configure the IP Address of the ABC in the Project

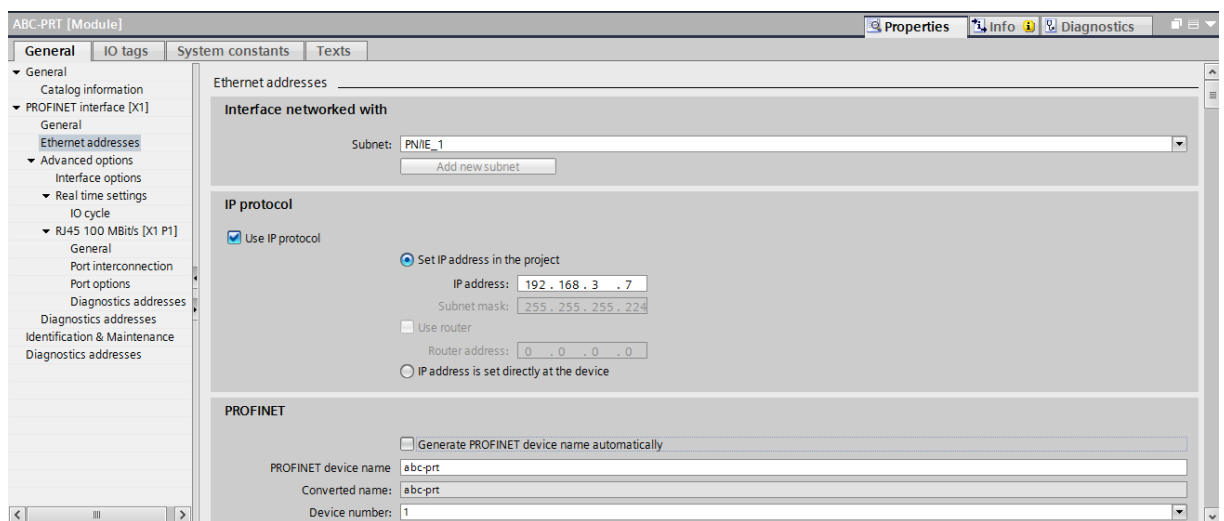
**NOTICE**

The IP settings in this example can cause serious network problems under certain circumstances. If you are in doubt about the correct IP settings for your network, ask your system administrator for assistance.

1. Navigate to the tab "Network view".
2. Double-click on the ABC-PRT symbol.
3. Double-click on module.



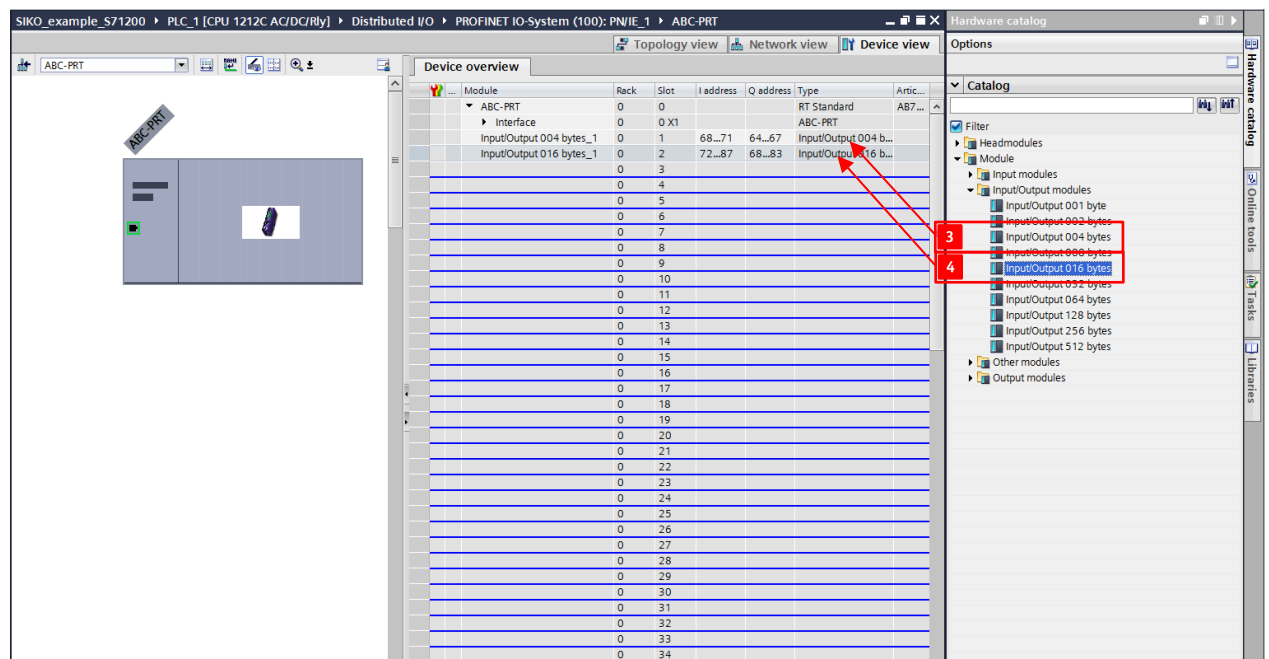
1. Navigate to the "Ethernet addresses" folder.



2. Choose "Set IP address in the project".
3. Enter the IP address used in chapter 2.2.5: "192.168.3.7".
4. Enter the PROFINET® device name used in chapter 2.2.6: "abc-prt".

### 2.2.12 Configure the Data Input / Output of ABC

1. Navigate to the tab "Device view".
2. Choose "ABC-PRT"
3. Add "Input/Output 004 bytes" from device "Anybus Cmunicator PN IO > Module" of the hardware catalog to the "Devices overview".
4. For each Sikonet-5 device, add "Input/Output 016 bytes" from device "Anybus Cmunicator PN IO > Module" of the hardware catalog to the "Devices overview".



5. Close "Device Configuration" window. The hardware configuration of the project is now complete.



### 3 Software Configuration

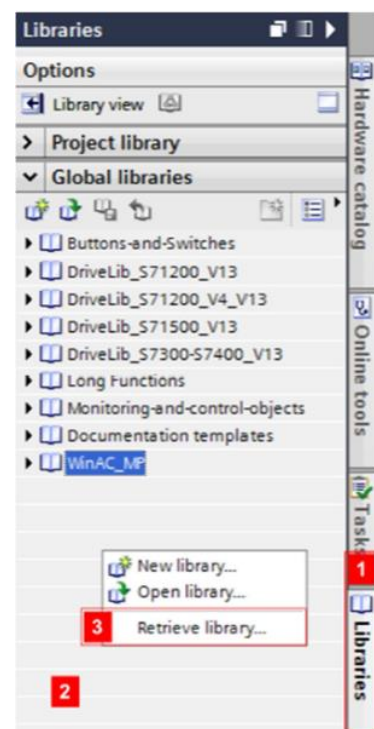
#### 3.1 Determine the “System constants” of ABC In- and Output for the SIKO Function Block

1. Navigate to the project tree.
2. Go to the “PLC tags”.
3. Double-click on “Default tag table [22]”.
4. Select “System constants”.
5. Read out the “ABC-PRT~Input\_Output\_016\_bytes\_1” and remember the value

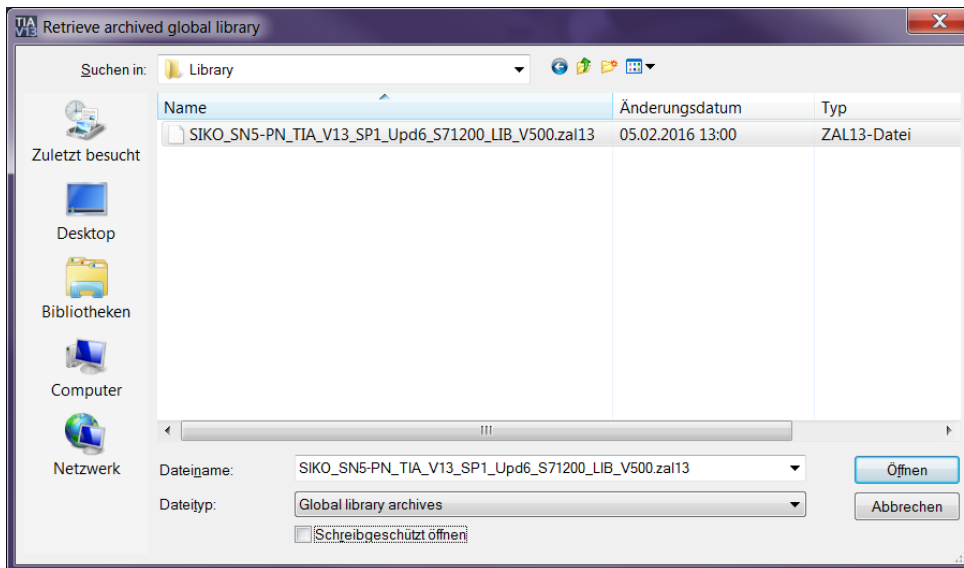
Name	Data type	Value	Comment
1 Local	Hw_SubModule	50	
2 Local-PROFINET_interface_1	Hw_Interface	64	
3 Local-PROFINET_interface_1-Port_1	Hw_Interface	65	
4 Local-HSC_1	Hw_Hsc	257	
5 Local-HSC_2	Hw_Hsc	258	
6 Local-HSC_3	Hw_Hsc	259	
7 Local-HSC_4	Hw_Hsc	260	
8 Local-HSC_5	Hw_Hsc	261	
9 Local-HSC_6	Hw_Hsc	262	
10 Local-AL_2_1	Hw_SubModule	263	
11 Local-DI_8_DQ_6_1	Hw_SubModule	264	
12 Local-Pulse_1	Hw_Pwm	265	
13 Local-Pulse_2	Hw_Pwm	266	
14 Local-PROFINET_IO-System	Hw_IoSystem	267	
15 ABC-PRT~Proxy	Hw_SubModule	270	
16 ABC-PRT~IODevice	Hw_Device	268	
17 ABC-PRT~Interface	Hw_Interface	271	
18 ABC-PRT~Interface-RJ45_100_MBit_s	Hw_Interface	272	
19 ABC-PRT~Head	Hw_SubModule	273	
20 ABC-PRT~Input_Output_004_bytes_1	Hw_SubModule	274	
5 ABC-PRT~Input_Output_016_bytes_1	Hw_SubModule	275	
22 OB_Main	OB_PLCycle	1	

#### 3.2 Import the SIKO-library

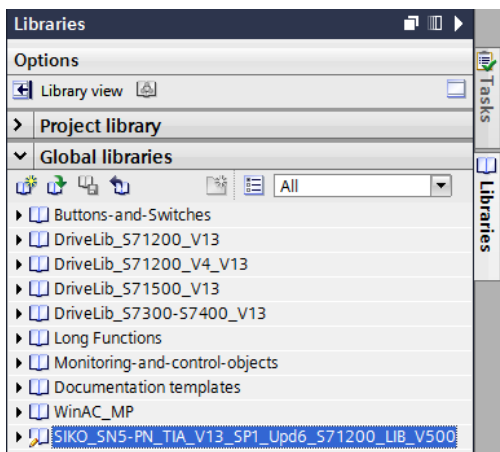
1. Navigate to the tab “Device view”.
2. Right-click in empty space inside the tab “Libraries”.
3. Execute the command “Retrieve library...”.



4. Browse to the storage location of the SIKO-library.
5. Select the archive SIKO\_SN5-PN\_TIA\_V13\_SP1\_Upd6\_S71200\_LIB\_V501.zal13.
6. Execute the command "Open".

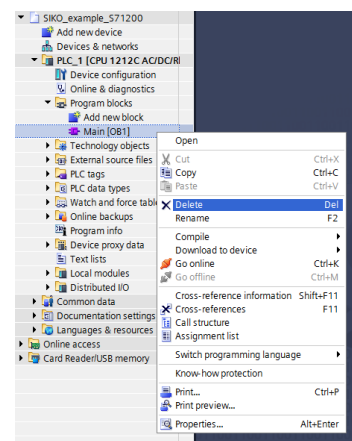


7. Choose a target directory to store the library.
8. The library appears in the "Global libraries" window.



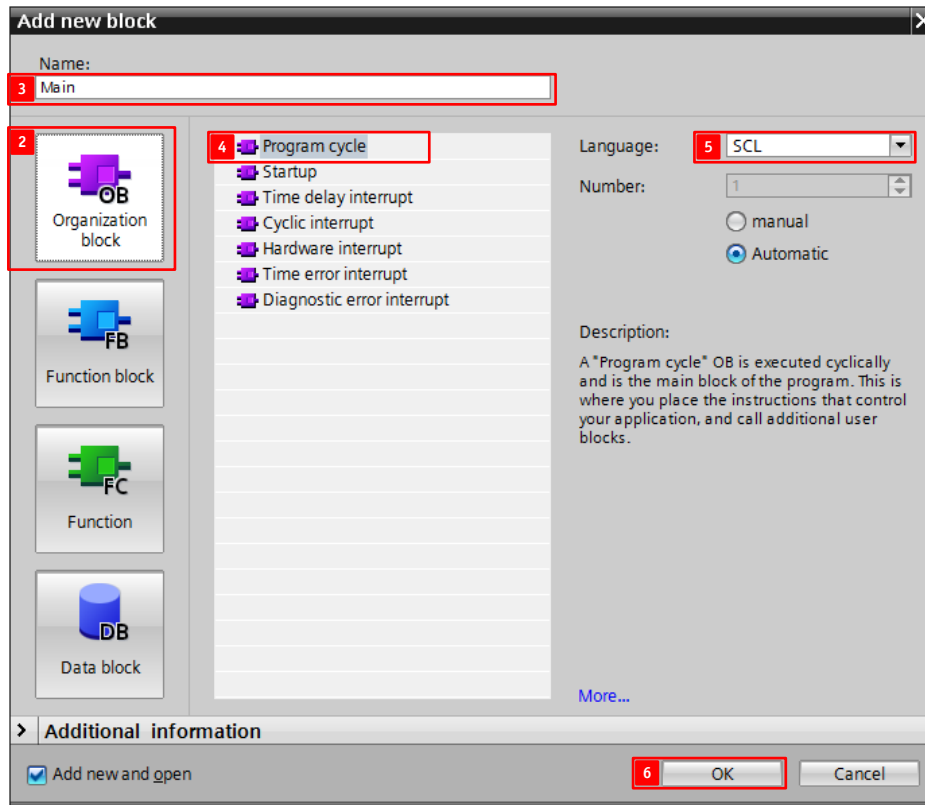
### 3.3 Delete OB1

1. Navigate to the project tree.
2. Go to the Program blocks folder.
3. Right-click on "Main [OB1]".
4. Delete OB1.

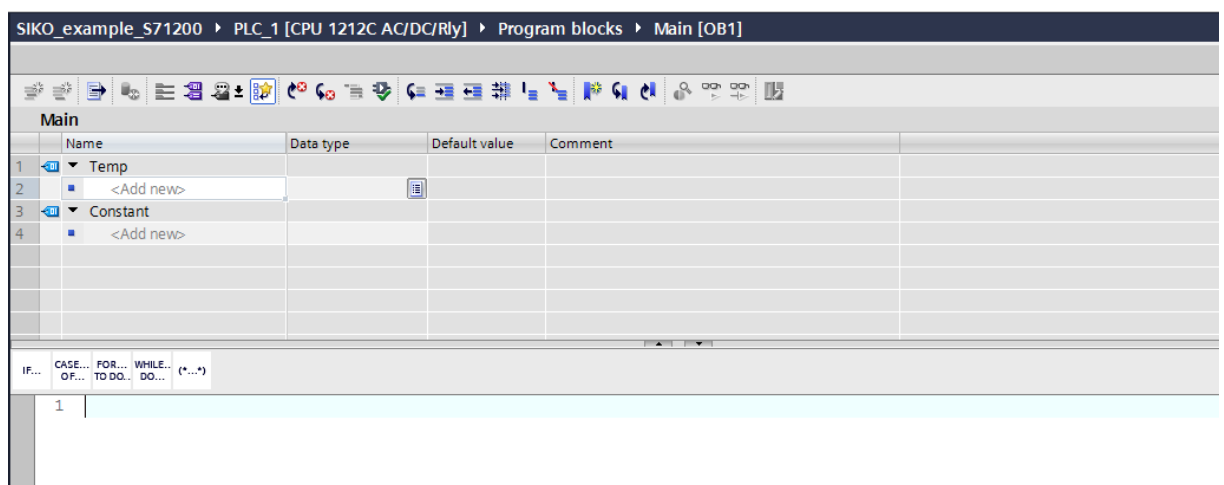


### 3.4 Create New OB1 in Language SCL

1. Create a new OB1 via the command "Program block" > "Add new block".
2. Choose "Organization block".
3. Enter "Main" as name.
4. Choose "Program cycle".
5. Choose language "SCL".
6. Confirm the settings with "OK".

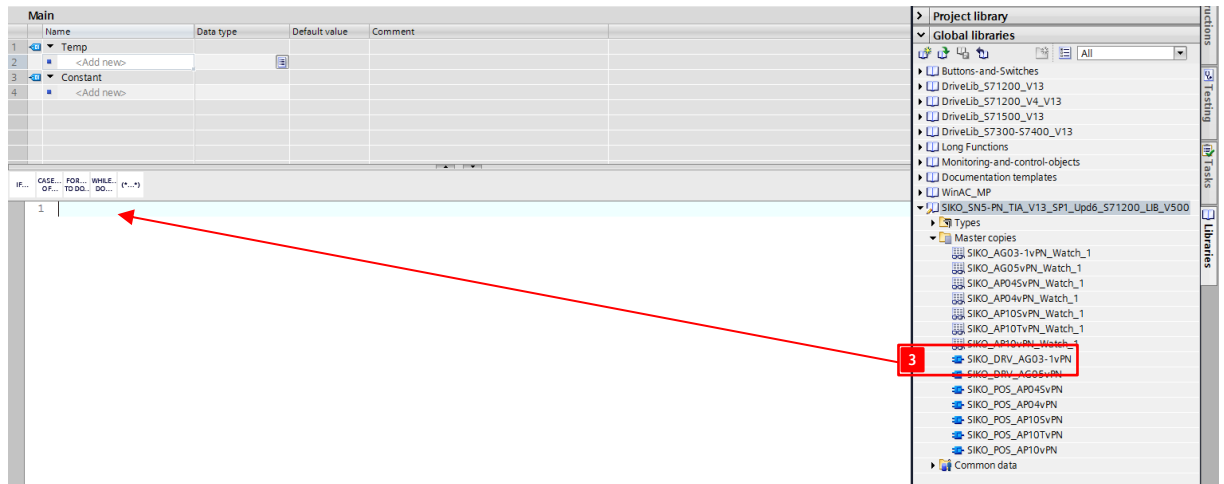


7. The SCL editor window is opened.

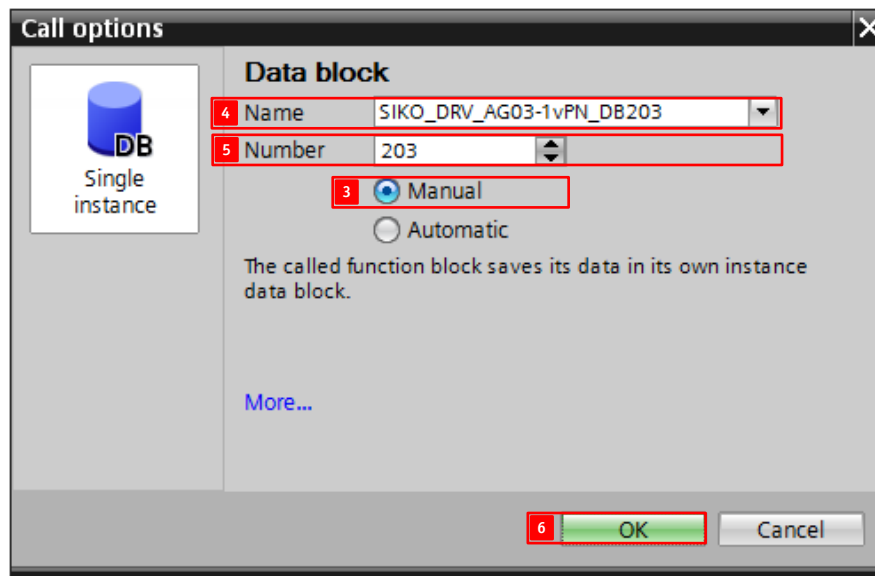


### 3.5 Function Block Call

1. Use drag and drop to move the function block "SIKO\_DRV\_AG03-1vPN" from the library SIKO\_SN5-PN\_TIA\_V13\_SP1\_Upd6\_S71200\_LIB\_V501 to the OB1 SCL editor window.



2. Now the window "Call options" appears.
3. Select "Manual".
4. Enter "SIKO\_DRV\_AG03-1vPN\_DB203" as name for the instance data block.
5. Enter Number "203".
6. Confirm with "OK".



### 3.5.1 Setup the Input and Output Addresses of the SIKO Function Block

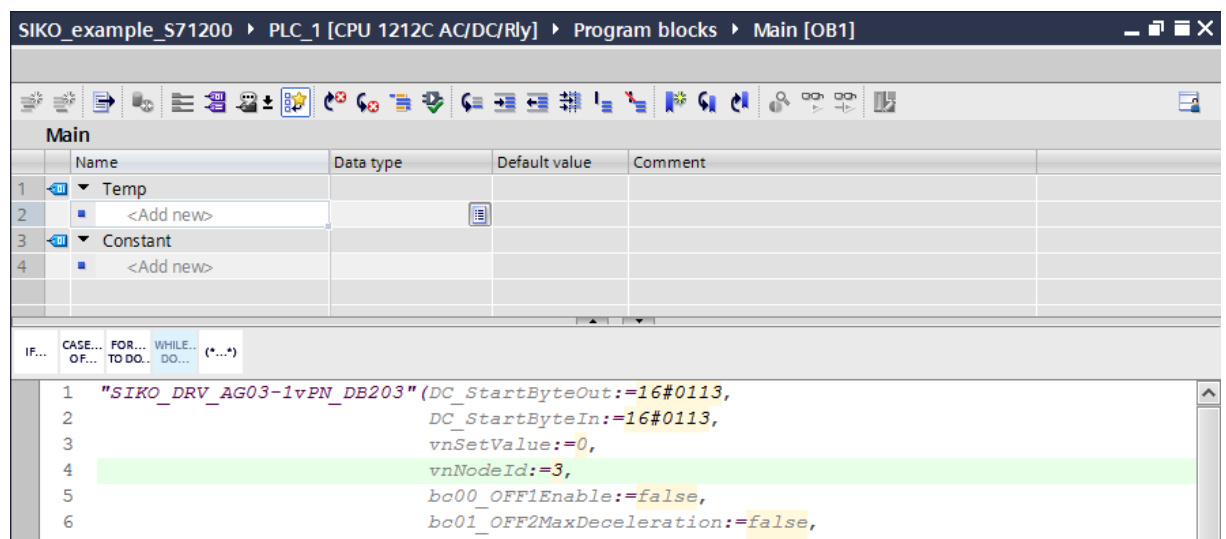
To setup the input and output addresses of the function block the decimal address value from Hw\_SubModule have to be converted to hexadecimal values.

In this example the conversion table looks like this:

Hw_SubModule	275dec	DC_StartByteOut	W#16#113
		DC_StartByteIn	W#16#113

The input "nNodeId" of the function block must be connected with the set node address of the Sikonet-5 device.

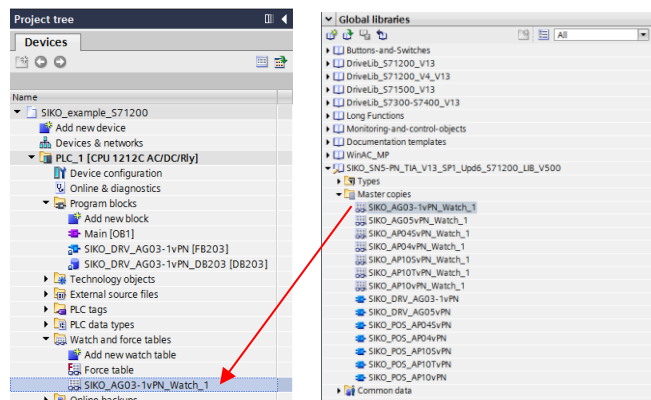
In this example the address 3 (dec) is used.



After set up of the addresses save the settings and close the editor window.

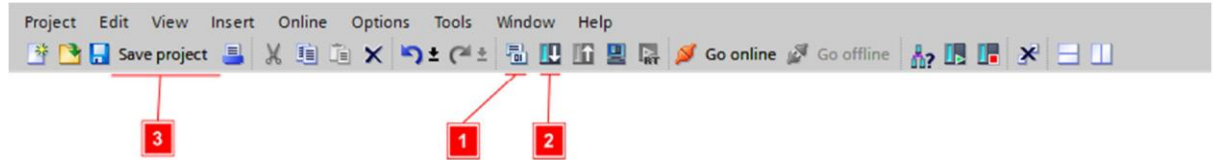
### 3.6 Add the Watch Table "SIKO\_AG03-1vPN\_Watch\_1" from the SIKO-library

1. Use drag and drop to move the watch table of the library to the project folder "Watch and force tables".



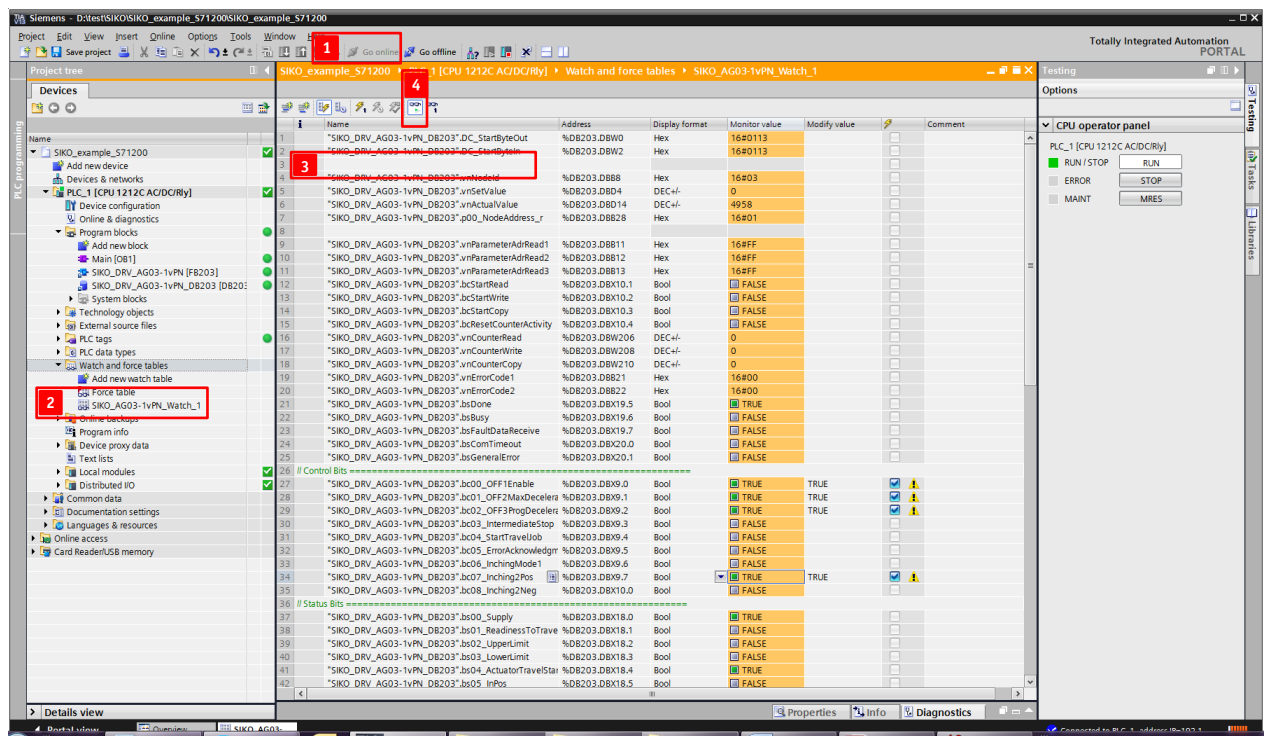
### 3.7 Complete the Project

1. Execute the command "Compile".
2. Execute the command "Download to device".
3. Execute the command "Save project".



### 3.8 Work with the Project

1. Go online with your PLC.
2. Double-click on "SIKO\_AG03-1vPN\_Watch\_1".
3. Left-click inside the watch table window.
4. Enable the "Monitor all" option in the watch table window.
5. Now you can control the SIKO-AG03-1 by setting the control bits.



## 4 Communication settings

### 4.1 Data Exchange

The FB is designed to send or receive in alternation the "nSetValue" (Write, Parameter: 0xFF "Set Point ") or the "nActualValue" (Read, Parameter: 0xFE "Actual Position") respectively, while no specific parameter access is active.

With the "nParameterAdrRead1", "nParameterAdrRead2" and "nParameterAdrRead3" further parameter can be included in the data read cycle. With default value 0xFE the inclusion is disabled.

NOTE: If "bsFaultDataReceive" is indicated the complete data exchange is stopped, while Control and Status Word are still updated! A missing or not responding subnetwork participant is indicated by "bsComTimeout" (0,5sec. + time set in parameter 0x02 Bus Timeout).

### 4.2 Parameter Access

The present module contains the parameter data in addition to the process data (CW/SW). Parameters that can be changed (read/write) exist in programming as actual value (\_r) and as target value (\_w) as well. Furthermore, it is differentiated between pure read parameters (only indicated as actual value) and pure write parameters (only indicated as target value).

A rising edge must be applied either to the "bcStartRead" or to the "bcStartWrite" input on the module described here in order to enable a read or write process of one of the variables.

#### 4.2.1 Read Parameters

If a rising edge is applied to the "bcStartRead" input, then all parameters will be read and can be used for further programming. If counter read value is not reset to "0" the read cycle was interrupted by read failure. This indicates to a communication failure.

#### 4.2.2 Write Parameters

If a rising edge is applied to the "bcStartWrite" input of the module, then all parameters will be transferred to the module. If counter write value is not reset to "0" the write cycle was interrupted by a write failure. This indicates to a communication failure or parameter value is beyond range of value accepted by AG03-1.

#### 4.2.3 Copy Parameters from Read to Write

If a rising edge is applied to the "bcStartCopy" input of the module, then all actual values (\_r) are copied to their corresponding target values (\_w).

### 4.3 S-Commands

After executing a S-Command a read cycle is been triggered to refresh all actual values (\_r).

#### 4.4 Counter Value

Count read value	Count write value	Name	Value range (dec)	Default
	1	0xA8 Programming Mode On/Off	0 ... 1	0
1		0x00 Note address	0 ... 31	1
2		0x01 Baud rate	0 ... 2	1
3	2	0x02 Bus Timeout	0 ... 20	20
4	3	0x03 Response parameter to a setpoint write access	0 ... 2	0
5	4	0x0E Configuration programming mode	0 ... 1	0
6	5	0x10 Controller Parameter P	1 ... 500	100
7	6	0x11 Controller Parameter I	0 ... 500	5
8	7	0x12 Controller Parameter D	0 ... 500	0
9	8	0x13 a-Pos	1 ... 100	50
10	9	0x14 v-Pos	Gear 24:1 => 1 ... 200 48:1 => 1 ... 100	30
11	10	0x15 a-Rot	1 ... 100	50
12	11	0x16 a-Inch	1 ... 100	50
13	12	0x17 v-Inch	Gear 24:1 => 1 ... 200 48:1 => 1 ... 100	30
14	13	0x18 UeNumerator	1 ... 10000	1
15	14	0x19 UeDenominator	1 ... 10000	1
16		0x1A EncoderResolution		1600
17	15	0x1B Counting direction	0 ... 1	0
18	16	0x1C Resolution per revolution	1 ... 59999	720
19	17	0x1E Offset value	-9999 ... 9999	0
20	18	0x1F Calibration value	-9999 ... 9999	0
21	19	0x20 Target window1 (near field)	0 ... 9999	10
22	20	0x21 Positioning type (loop type)	0 ... 2	0
23	21	0x22 Loop length	0 ... 9999	800
24	22	0x23 Inpos Mode	0 ... 2	0
25	23	0x24 Delta Inch	-1000000 ... 1000000	1600
26	24	0x25 AccelerationTypeInchingMode2	0 ... 1	0
27	25	0x26 Inching2 Offset	10 ... 100	100
28	26	0x27 Stop Mode Inching2	0 ... 1	0
29	27	0x28 Operating mode	0 ... 1	0
30	28	0x29 Limit_1	-9999999 ... 9999999	10000000
31	29	0x2A Limit_2	-9999999 ... 9999999	-10000000
32	30	0x2D Contouring Error Limit	1 ... 30000	400
33	31	0x36 d-Pos	1 ... 101	101



Count read value	Count write value	Name	Value range (dec)	Default
34	32	0x37 Torque Disable	20 ... 125	125
35		0x60 Output Stage Temperature		0
36		0x61 Voltage Of Control		0
37		0x62 Voltage Of Output Stage		0
38		0x63 Battery voltage		0
39		0x64 Motor Current		0
40		0x65 DeviceCode		0
41		0x66 SoftwareSecondaryController		0
42		0x67 Software Main Controller		0
43		0x68 Serial Number		0
44		0x69 Production Date		0
45		0x6A Gear Reduction		0
46		0x6B Actual Position		0
47		0x6C Actual Rotational Speed		0
48		0x80 Number Of Errors Recorded		0
49		0x81 Error 01		0
50		0x82 Error 02		0
51		0x83 Error 03		0
52		0x84 Error 04		0
53		0x85 Error 05		0
54		0x86 Error 06		0
55		0x87 Error 07		0
56		0x88 Error 08		0
57		0x89 Error 09		0
58		0x8A Error 10		0
59	33	0xAA FreezeAV	0 ... 1	0
60		0xFA System Status word		0
61		0xFE Position value		0
62		0xFF Setpoint		0
	34	0xA0 System Command	1 ... 3, 5 ... 9	0

#### 4.4.1 Error Codes

If a communication error occurs, there is an error code present at the outputs "nErrorCode1" and "nErrorCode2". Please refer to the AG03-1 manual (keyword: error codes) for a complete description of these error codes.